

TRUCK UTILITY LT GS LANDROVER SERIES 3, ALL TYPES  
BODY HEIGHT VARIATION DATA  
EQUIPMENT INSPECTION AND EXAMINATION DATA

**Introduction**

1. Variation (lean) in body height of the subject vehicle can be caused by the springs settling or wind up in the shackle bushes. This instruction details the procedure for checking, and the acceptable variations in height.

**Detail**

2. With the vehicle in the static unladen condition standing on level ground and the tyres correctly inflated, measure the distance from the ground to the shackle pin centres, marked 'A' and 'B' Fig 2. The permissible variation between vehicle sides in front or rear suspension height is 25 mm.

3. Problems have arisen occasionally with settling of front or rear road springs, invariably the springs in question have been found to be within the required limits. It has been established that the apparent settling is generally a result of wind up in the shackle bushes.

4. In these cases, it is recommended that the following steps be taken before considering removal of the springs for investigation:

- a. Check the part numbers to ensure that the correct springs are fitted. The part number is stencilled on the top face and stamped on the under face of one of the leaves as shown in Fig 1. (Springs that are within tolerance are not to be changed).
- b. With the vehicle weight taken off the road springs, remove the shackle pins. If they are not a free fit in their mating threads or in the rubber bush inner sleeves, clean the threads, or if necessary, ream the holes through which the shackle pin passes.
- c. Remove all traces of phosphating from the ends of the inner faces of the shackle side plates.
- d. Replace the shackle pins and on achieving the spring position as shown in Fig 2, tighten first the shackle pin and then the lock nut to 81–95 Nm.
- e. Allow the vehicle weight to be taken on the road springs.

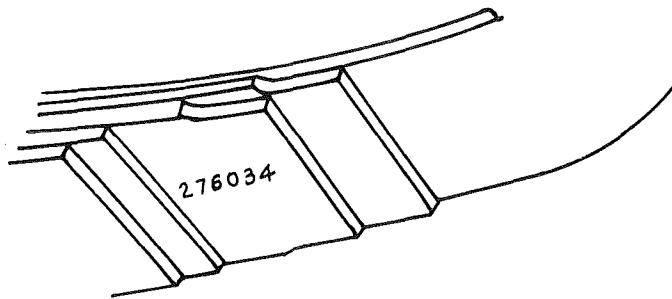


FIG 1 – LOCATION OF SPRING PART NUMBER

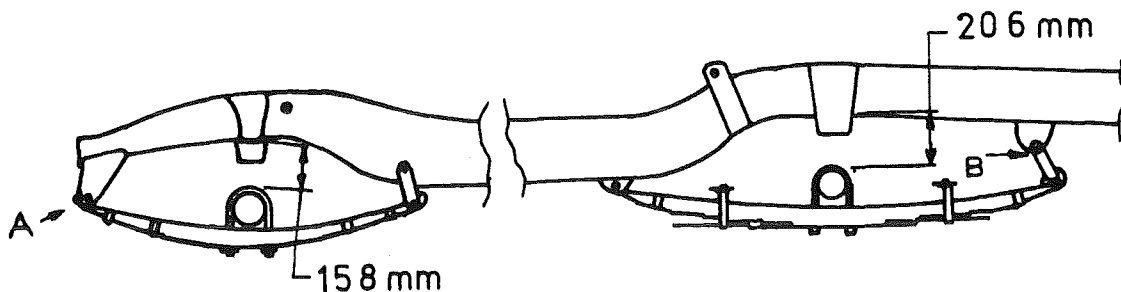


FIG 2 – SPRING DIMENSION REFERENCE POINTS

END