

**TRUCK UTILITY LT GS LANDROVER SERIES 3, ALL TYPES  
RELOCATION OF BRAKE SERVO HOSE ON INTAKE MANIFOLD  
MODIFICATION INSTRUCTIONS**

Issue of this instruction is authorized by the CONMEA.

### Introduction

1. The vacuum hose from the intake manifold to the brake servo is located at the rear of the engine, thus under conditions where continuous braking is required, cylinders No 5 and 6 are subjected to a leaning of the mixture. This instruction details the relocation of the hose to a central position on the intake manifold to enable the leaning effect to be spread over all the cylinders.
2. **Estimated Manhours to Perform.** 2.0 (initial planning only).
3. **Priority.** Group 2.
  - a. All vehicles on issue to units are to be modified when next in workshop for repair.
  - b. All vehicles held by Supply Units should normally be modified before issue. However, where this would delay priority issues, equipments may be released unmodified providing their record books are endorsed with details of outstanding modifications.
4. **Modification to be Applied to.** All subject vehicles.
5. **Item Affected.** Brake servo vacuum hose.
6. **Action Required.** By RAEME units authorized to carry out unit, field and base repairs in accordance with WKSP A 850.

**TABLE 1 — STORES REQUIRED** (To be demanded through normal supply channels)

Item	DSN	Designation	Qty per Equip
1.	4730-66-010-7568	PLUG, PIPE, MI, MALE, 1/4 in BSP	1

### Detail

7. Modification procedure is as follows:
  - a. Remove the vacuum pipe and its adapter from the intake manifold.
  - b. Plug the hole left vacant by the removal of the adapter using item 1 from Table 1.
  - c. Remove the carburettor and spacer from the engine.
  - d. Drill and tap the intake manifold as shown in Fig 1, ensuring that no swarf is permitted to enter the engine.

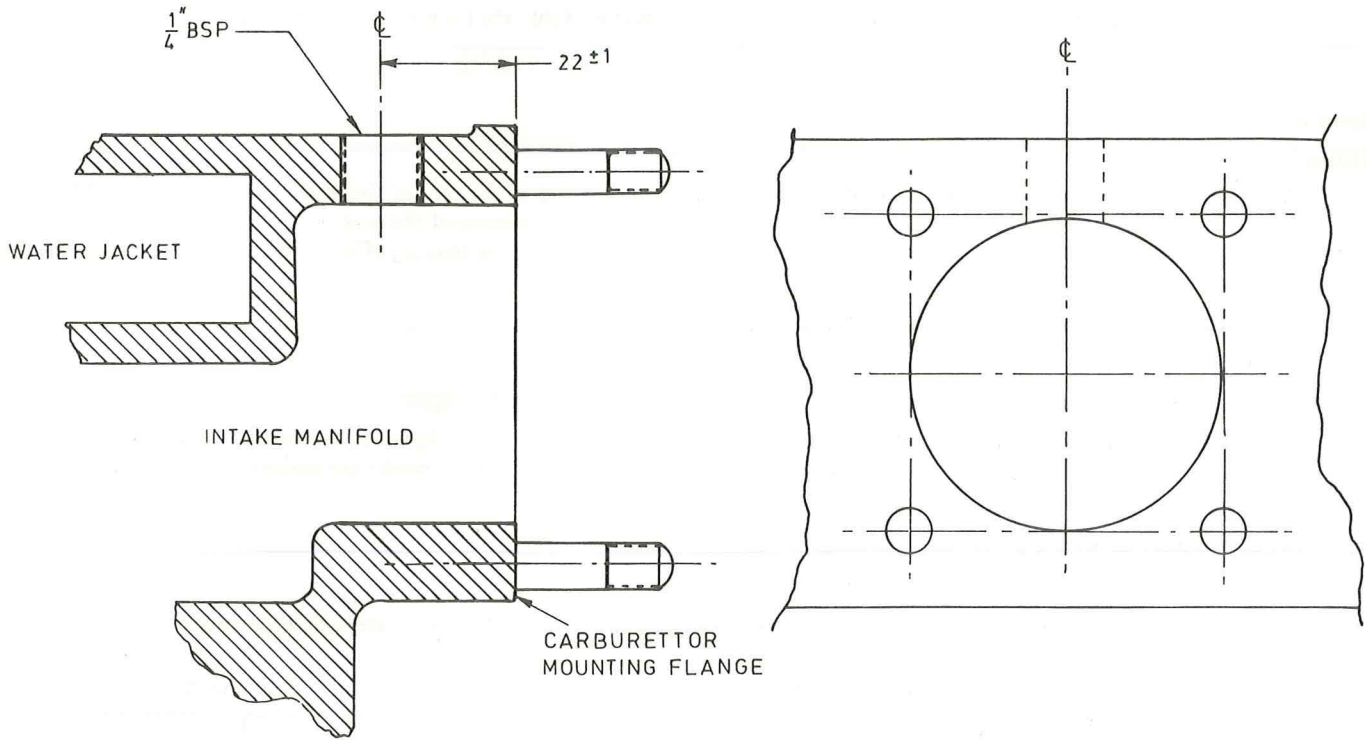
**CAUTION:**

1. Due to the close proximity of the cylinder head water jacket, dimensions given in Fig 1 must be strictly adhered to.

- e. File a flat area on the intake manifold around the threaded hole to provide a seating area for the adapter.
- f. Remove material from the carburettor spacer as shown in Fig 2.
- g. Fit the adapter and vacuum pipe to new location in manifold as shown in Fig 3.
- h. Refit the carburettor and spacer to the engine.

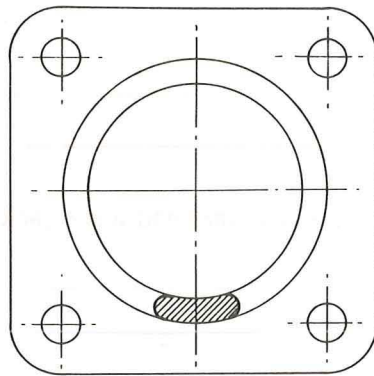
### Modification Record Plate

8. The modification record plate is situated on the side of the front passenger seat base, adjacent to the vehicle specification plate. To record the modification proceed as follows:
  - a. Cargo vehicles, deface the numeral 7.
  - b. FFR vehicles, deface the numeral 5.



DIMENSIONS IN MILLIMETRES  
UNLESS OTHERWISE STATED

FIG 1 - INTAKE MANIFOLD MODIFICATION



DIMENSIONS IN MILLIMETRES

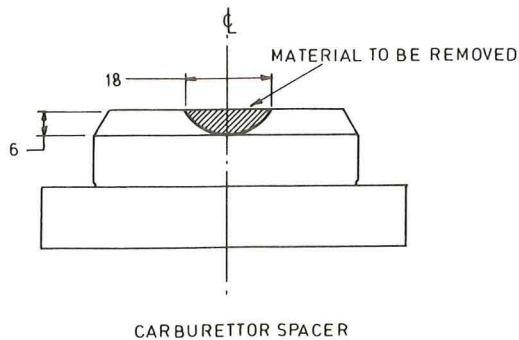
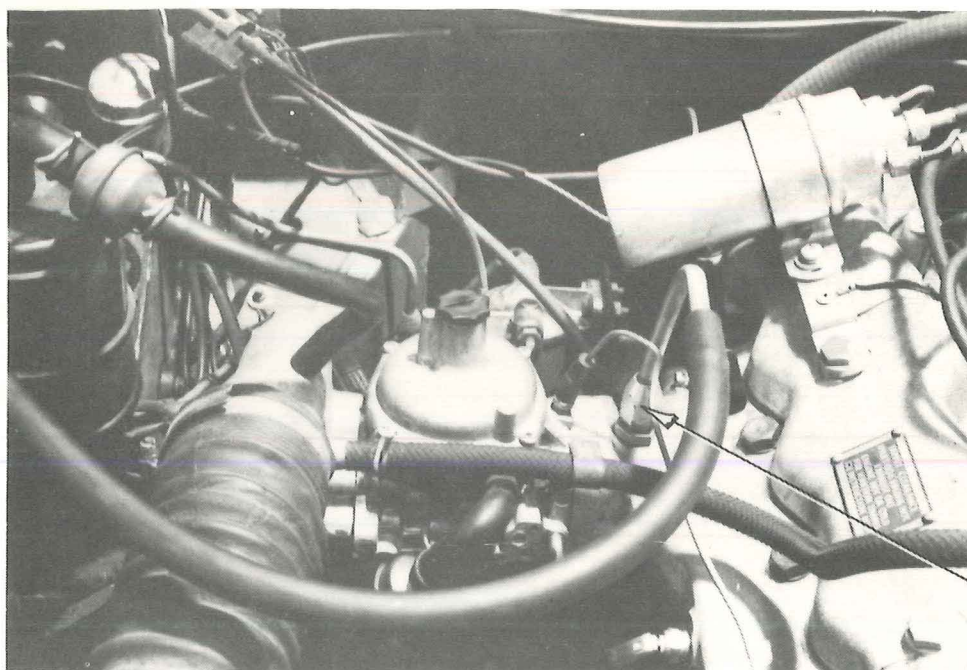


FIG 2 - CARBURETTOR SPACER BLOCK MODIFICATION



BRAKE SERVO  
HOSE CONNEXION

FIG 3 - NEW LOCATION OF BRAKE SERVO HOSE CONNEXION

END