

TRUCK UTILITY, LIGHT WEIGHT MC2 - LANDROVER
SERIES 3 - ALL TYPES
FITTING BLACKOUT DRIVING LIGHTS

MODIFICATION INSTRUCTION

Issue of this instruction is authorized by the CONMEA

1. This instruction has been completely revised. All copies of Issue 1, Jul 83 are to be destroyed, all vehicles modified in accordance with Issue 1 are to be re-modified in accordance with Issue 2.
2. This instruction details the fitting of blackout driving lights to replace the blackout marker lights currently used on the subject vehicle. The instruction has been revised to prevent the ingress of moisture into the lights and the use of the light as a step.

Note:

1. NSN and Designation used in this instruction were current at the date of issue. If twelve months or more have expired since issue, the NSN should be checked for supersession.

General

3. Estimated Manhours to Perform. (Initial planning only).
 - a. Vehicles previously modified in accordance with VEH G 307-11, Issue 1, 1.2 hr.
 - b. Vehicles not already modified 2.2 hr.
4. Priority. Group 2.
 - a. All equipments as detailed in para 5 are to be modified when next in workshop for repair.
 - b. Equipments held by supply units should only be modified before issue to units of the ODF & LSG. However, where this would delay priority issues, equipments may be released unmodified provided their Equipment Record Books are endorsed with details of outstanding modifications.
5. Modification to be Applied to. All vehicles of the ODF & LSG and units supporting the ODF & LSG. All other vehicles are only to be modified after direction by HQ Log Comd.
6. Item Affected. NSN 6220-00-670-7692 Light Marker Clearance.
7. Action Required. By RAEME workshops authorized to carry out unit, field and base repairs in accordance with WKSP A 850.

TABLE 1 - STORES REQUIRED (To be demanded through normal supply channels)

Item	NSN	Designation	Qty per Equip
1.	9510-66-097-0452	BAR CARBON STEEL FLAT 35 MM BY 5 MM	As Required

TABLE 2 - STORES REQUIRED (To be demanded through normal supply channels)

Item	NSN	Designation	Qty per Equip
1.	5305-66-012-3855	BOLT	2
2.	5305-66-013-9523	SCREW SELF TAPPING	1
3.	5306-66-019-3768	BOLT MACHINE UNF 5/16 INCH BY 1-1/4 INCH	2
4.	5310-66-012-7723	NUT	2
5.	5310-66-013-0070	WASHER SPRING 5/16 INCH	2
6.	5310-66-019-3957	NUT MACHINE UNF 5/16 INCH	2
7.	5325-66-027-6294	GROMMET BLANKING	As Required
8.	5325-66-055-8826	GROMMET WIRING	As Required
9.	5340-66-024-8834	CLAMP WIRE	3
10.	5940-66-549-2815	SPLICE CONNECTOR BLUE	2
11.	6145-66-018-3954	WIRE ELECTRICAL AUTO 3 MM BLACK	As Required
12.	6620-12-121-7310	HEADLAMP ASSEMBLY BLACKOUT	2
13.	9510-66-097-0452	BAR CARBON STEEL FLAT 35 MM BY 5 MM	As Required

8. Stores Removed. NSN 6220-00-670-7692 Light, Marker, Clearance. To be disposed of in accordance with GEN P series.

Detail

9. Modification Procedure. Modification Procedure for vehicles previously modified is as follows:

- a. Disconnect vehicle batteries and remove blackout driving light assemblies.
- b. Remove blackout driving light mounting brackets from brushguard. Removal of brushguard from vehicle may aid in the removal of blackout driving light mounting brackets.
- c. Manufacture two brackets using Item 1, Table 1, as shown in Fig 1.
- d. Position brackets on brushguard, as shown in Figs 3 and 4 and weld brackets as shown in Fig 2.
- e. Mount blackout driving lights to brackets and reconnect wiring.
- f. Reconnect vehicle batteries and test blackout driving light circuit.
- g. Clean and paint all affected areas in accordance with WKSP B 700.

10. Modification Procedure. Modification procedure for vehicles not previously modified is as follows:

- a. Disconnect vehicle batteries.
- b. Manufacture two brackets using Item 13, Table 2 as shown in Fig 1.
- c. Position brackets on brushguard as shown in Figs 3 and 4 and weld brackets as shown in Fig 2.
- d. Drill an 8 mm hole behind the brackets through the mudguards (using the hole in the brackets as a guide) and fit a suitable wiring grommet, Item 8, Table 2.
- e. Mount blackout headlamp assemblies, Item 12, Table 2, to blackout driving light brackets, using Items 3, 5 and 6, Table 2.
- f. Disconnect and remove blackout marker lights.
- g. Remove connectors from ends of blackout marker light wiring and extend wiring on both left and right sides using Items 10 and 11, Table 2 and redirect wiring through grommets fitted in sub-paragraph d.
- h. Secure wiring for left side blackout driving light away from exhaust pipe using Items 1, 4 and 9, Table 2 as shown in Fig 5.
- i. Secure wiring for right side blackout driving light using Items 2 and 9, Table 2 as shown in Fig 6.
- j. Connect blackout driving light wiring, reconnect vehicle batteries and test blackout driving light circuit.
- k. Fit suitable blanking grommet, Item 7 Table 2, to the holes used for the blackout marker light wiring.
- l. Paint all affected areas in accordance with WKSP B 700.

Record of Modification

11. Deface numeral 18 on the vehicle modification record plate, situated on the front passenger seat base, adjacent to vehicle specification plate. Part 3 of the Record Book for Service Equipment TGM 120 is to be endorsed with the date and the number of this instruction.

ALL DIMENSIONS ARE IN MM

MATERIAL 35 MM BY 5 MM FLAT

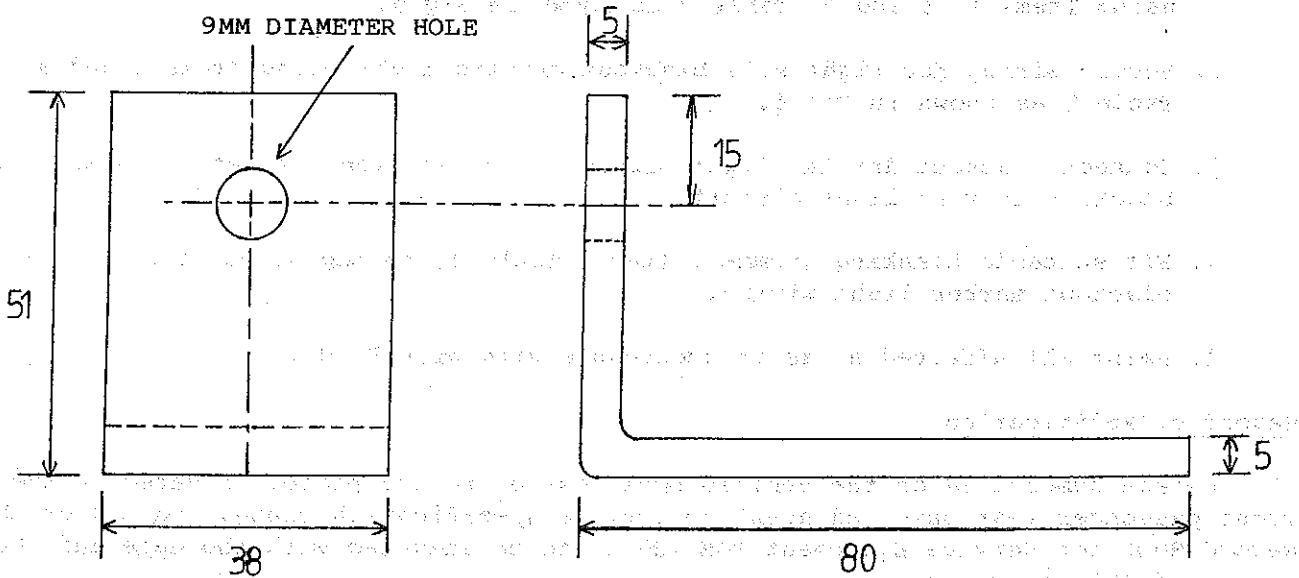


FIG 1 - MOUNTING BRACKET

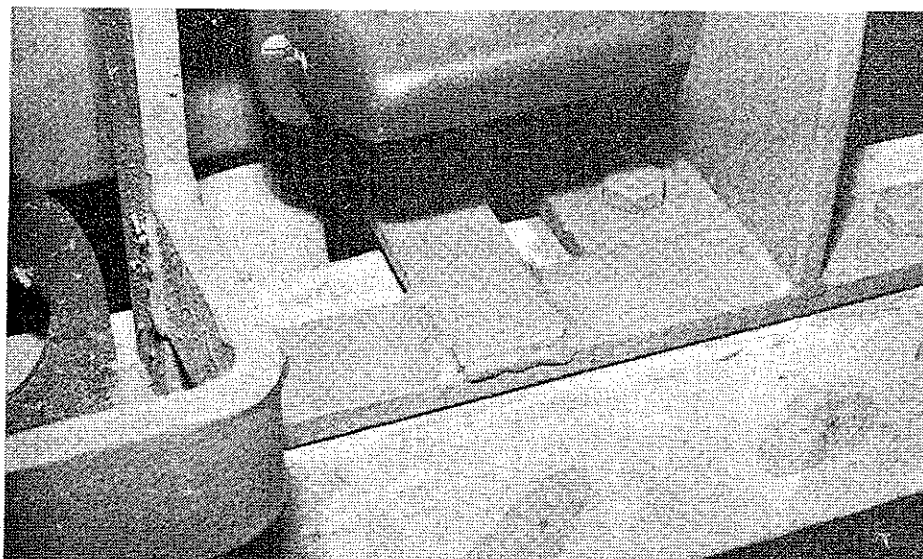


FIG 2 - WELDING POSITION



FIG 3 - DRIVERS SIDE

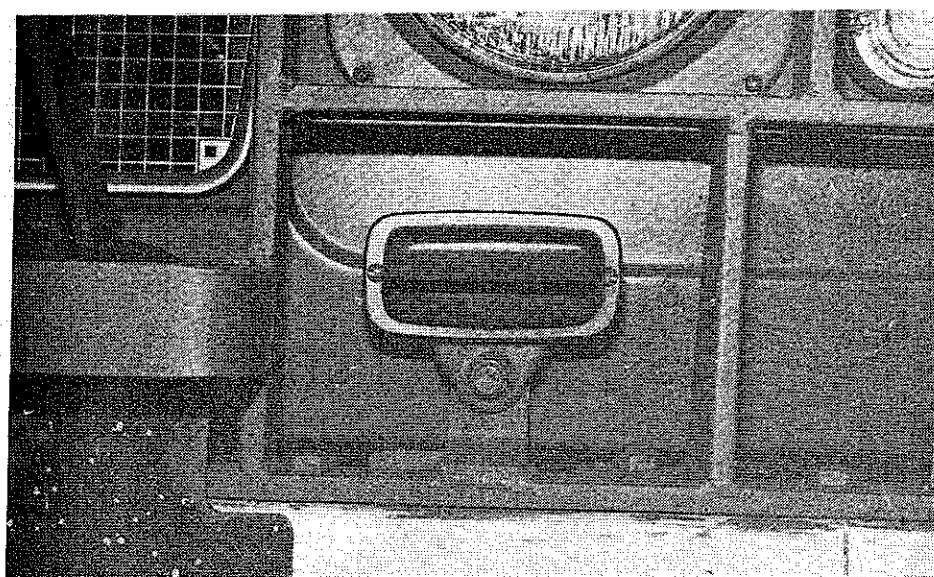


FIG 4 - PASSENGERS SIDE

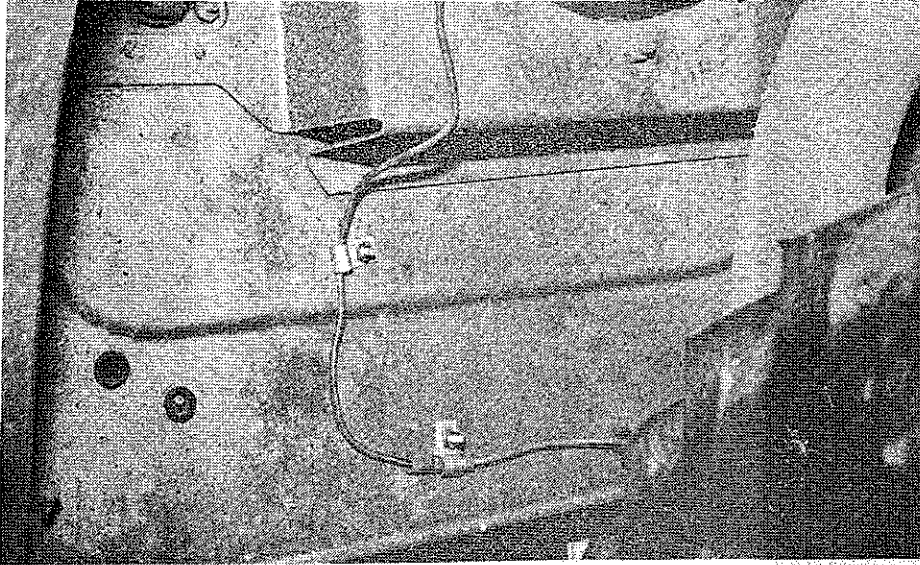


FIG 5 - PASSENGERS SIDE

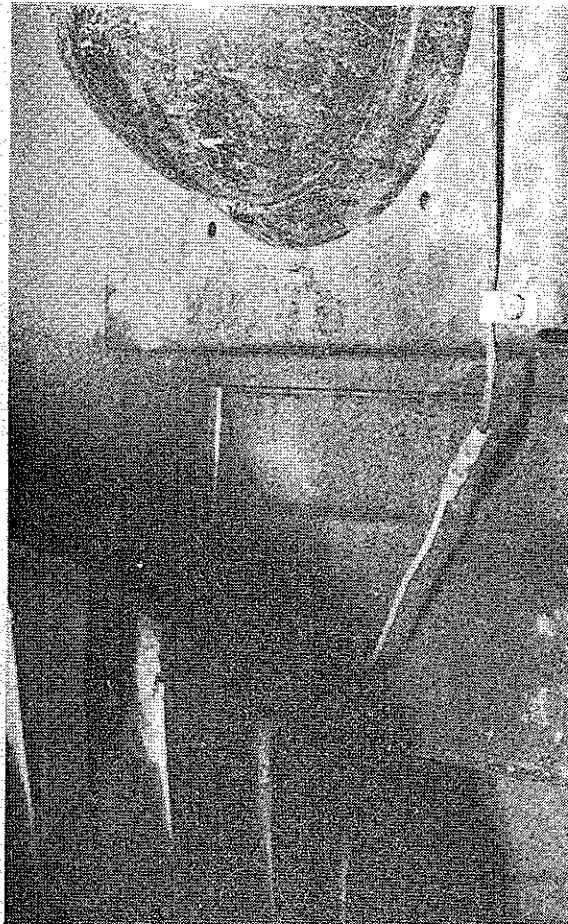


FIG 6 - DRIVERS SIDE

E N D