

RESTRICTED

**ELECTRICAL AND MECHANICAL  
ENGINEERING INSTRUCTIONS**

**VEHICLE G 306**

**TRUCK, UTILITY  
LIGHT GS CARGO  
LANDROVER SERIES III**

**WORKSHOP MANUAL**

Distribution 4 Ltd

RESTRICTED

THE UNIVERSITY OF CHICAGO

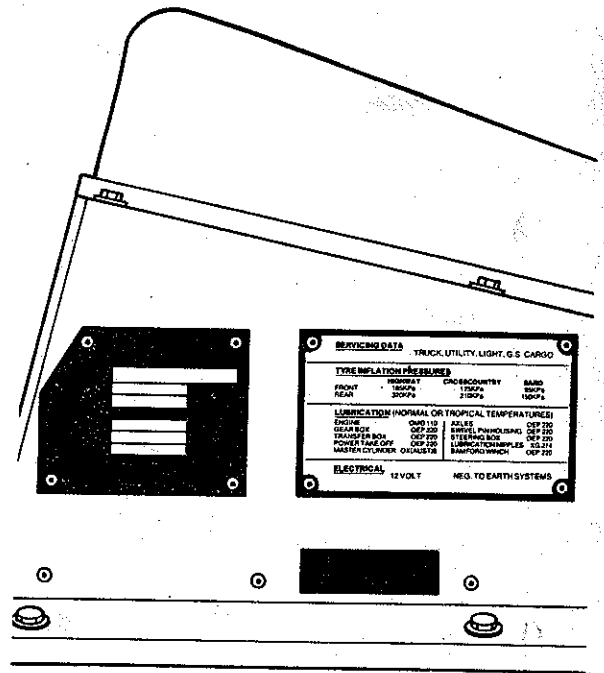
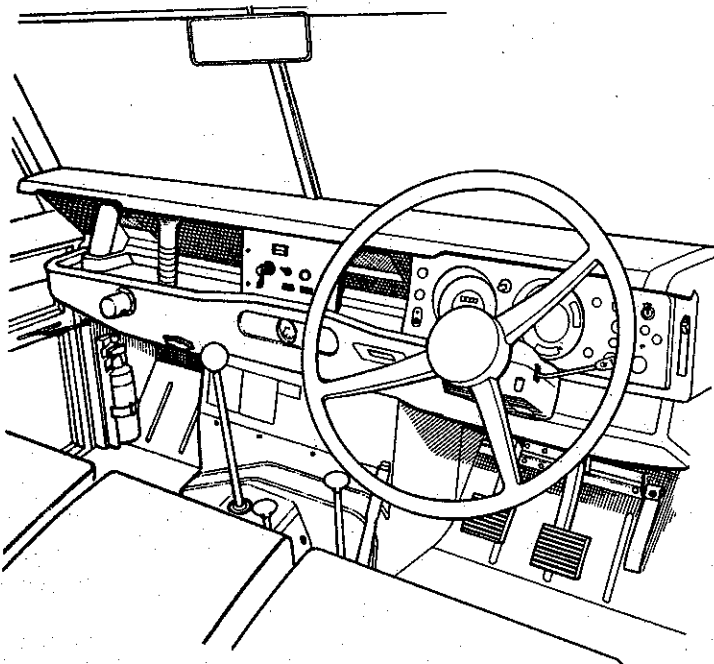
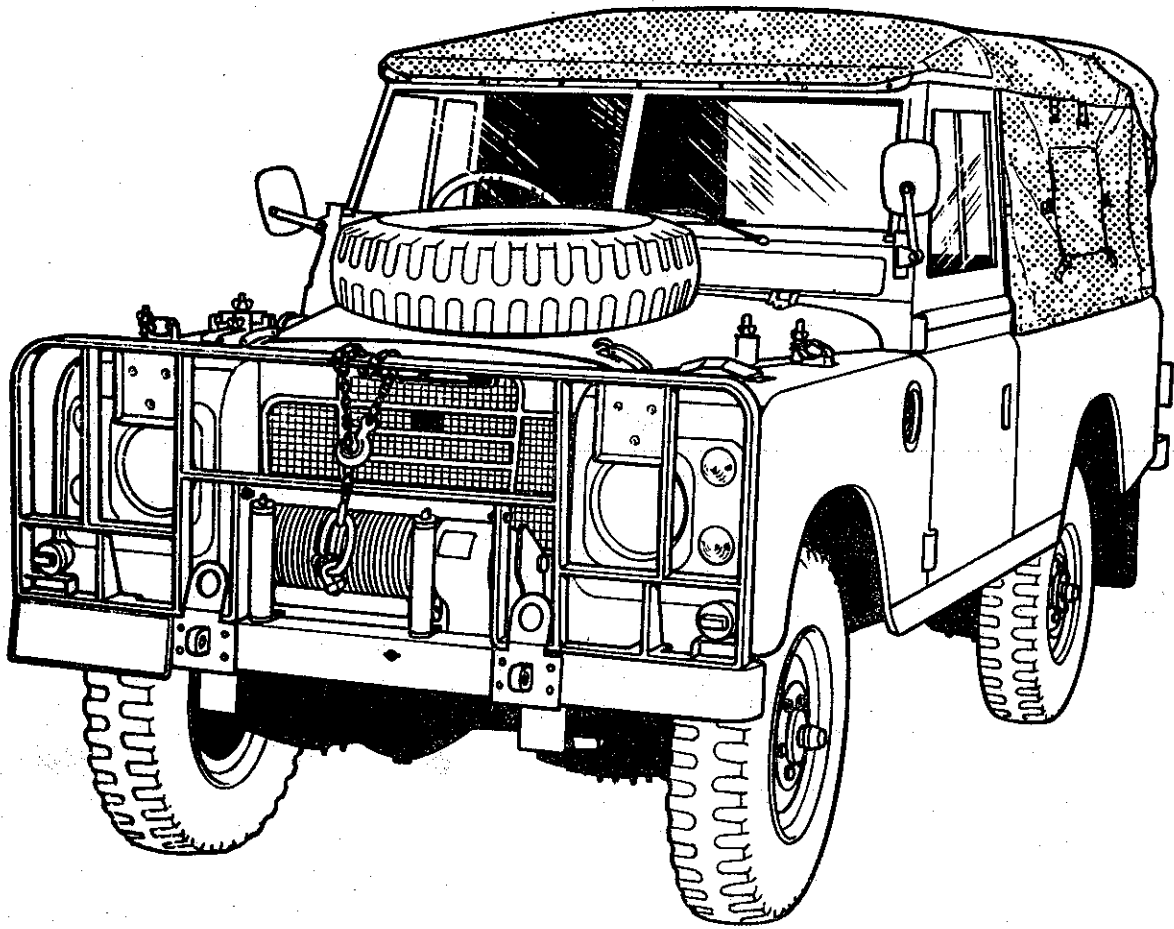
PHYSICS DEPARTMENT

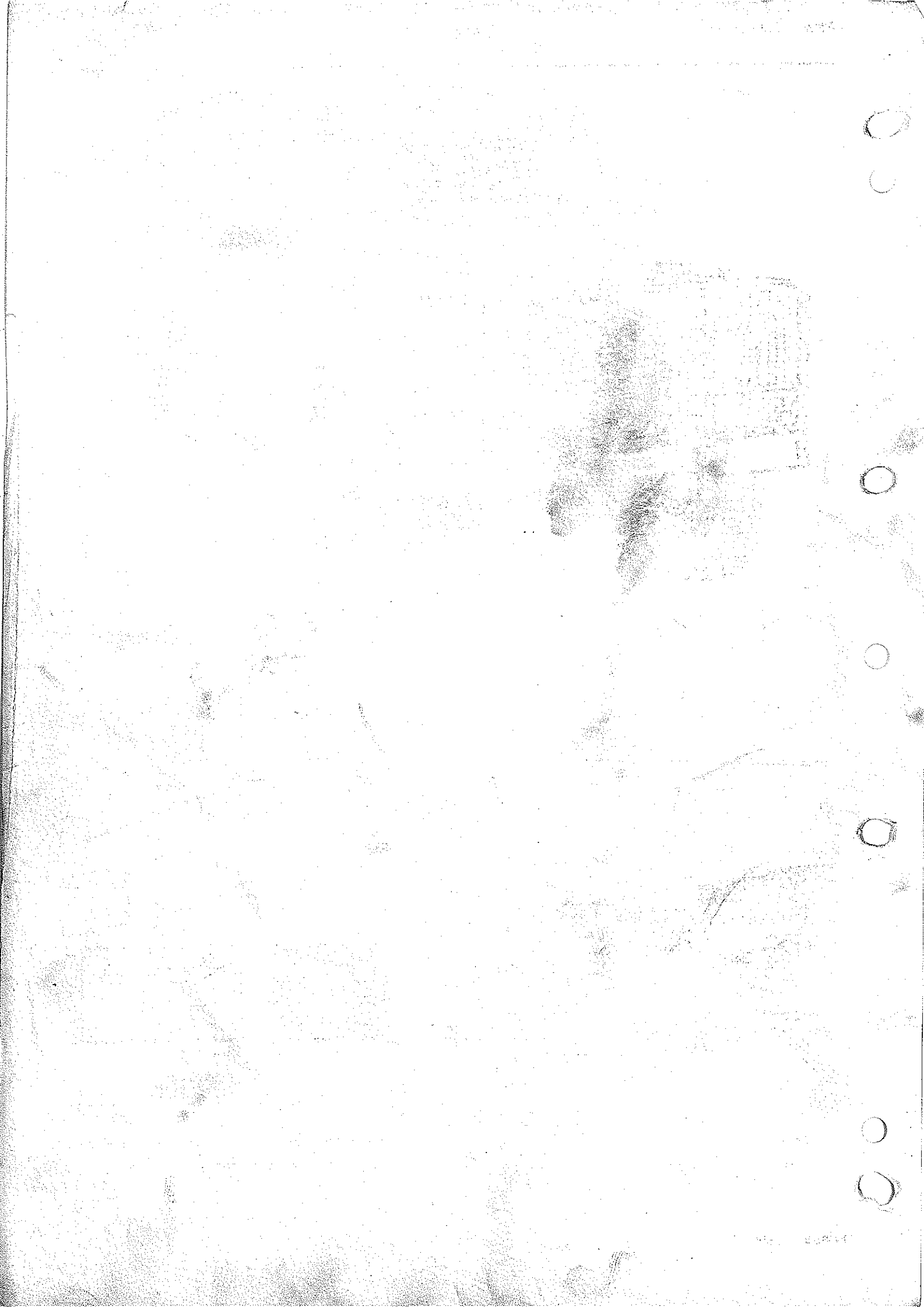
REPORT OF THE

COMMISSION ON THE

RESEARCH

IN PHYSICS





## CONTENTS

	<b>GROUP</b>
Alphabetical index ... ..	02
General specification data ... ..	04
Engine tuning data ... ..	05
Torque wrench settings ... ..	06
Recommended lubricants, fuel and fluids—capacities ... ..	09
Maintenance ... ..	10
Engine ... ..	12
Emission control ... ..	17
Fuel system ... ..	19
Cooling system ... ..	26
Manifold and exhaust system ... ..	30
Clutch ... ..	33
Gearbox (synchromesh) ... ..	37
Propeller and drive shafts ... ..	47
Rear axle and final drive ... ..	51
Front axle and final drive ... ..	54
Steering ... ..	57
Front suspension ... ..	60
Rear suspension ... ..	64
Brakes ... ..	70
Wheels and tyres ... ..	74
Paintwork ... ..	78
Heating and ventilation ... ..	80
Windscreen wipers and washers ... ..	84
Electrical ... ..	86
Instruments ... ..	88
Service tools ... ..	99



\*\* ABBREVIATIONS AND SYMBOLS USED THROUGHOUT THIS MANUAL \*\*

Term	Abbreviation or symbol	Term	Abbreviation or symbol
Across flats (bolt size) .. .. .	AF	Midget edison screw .. .. .	MES
After bottom dead centre .. .. .	ABDC	Millimetre .. .. .	mm
After top dead centre .. .. .	ATDC	Miles per gallon .. .. .	mpg
Alternating current .. .. .	a.c.	Miles per hour .. .. .	mph
Ampere .. .. .	amp	Minimum .. .. .	min
Ampere-hour .. .. .	amp hr	minute (of angle) .. .. .	'
Atmospheres .. .. .	Atm	Minus (of tolerance) .. .. .	-
Before bottom dead centre .. .. .	BBDC	Negative (electrical) .. .. .	-
Before top dead centre .. .. .	BTDC	Number .. .. .	No.
Bottom dead centre .. .. .	BDC	Ohms .. .. .	ohm
Brake mean effective pressure .. .. .	BMEP	Ounces (force) .. .. .	ozf
Brake horse power .. .. .	bhp	Ounces (mass) .. .. .	oz
British standards .. .. .	BS	Ounce inch (torque) .. .. .	ozf.in.
Carbon monoxide .. .. .	CO	Outside diameter .. .. .	o.dia.
Centimetre .. .. .	cm	Paragraphs .. .. .	para.
Centigrade (Celsius) .. .. .	C	Part number .. .. .	Part No.
Cubic centimetre .. .. .	cm <sup>3</sup>	Percentage .. .. .	%
Cubic inch .. .. .	in <sup>3</sup>	Pints .. .. .	pt
Degree (angle) .. .. .	deg or °	Pints (US) .. .. .	US pt
Degree (temperature) .. .. .	deg or °	Plus (tolerance) .. .. .	+
Diameter .. .. .	dia.	Positive (electrical) .. .. .	+
Direct current .. .. .	d.c.	Pound (force) .. .. .	lbf
Fahrenheit .. .. .	F	Pounds feet (torque) .. .. .	lbf.ft.
Feet .. .. .	ft	Pounds inches (torque) .. .. .	lbf.in.
Feet per minute .. .. .	ft/min	Pound (mass) .. .. .	lb
Fifth .. .. .	5th	Pounds per square inch .. .. .	lb/in <sup>2</sup>
Figure (illustration) .. .. .	Fig.	Radius .. .. .	r
First .. .. .	1st	Rate (frequency) .. .. .	c/min
Fourth .. .. .	4th	Ratio .. .. .	:
Gramme (force) .. .. .	gf	Reference .. .. .	ref.
Gramme (mass) .. .. .	g	Revolution per minute .. .. .	rev/min
Gallons .. .. .	gal	Right-hand .. .. .	RH
Gallons (US) .. .. .	US gal	Right-hand steering .. .. .	RHStg
High compression .. .. .	h.c.	Second (angle) .. .. .	"
High tension (electrical) .. .. .	H.T.	Second (numerical order) .. .. .	2nd
Hundredweight .. .. .	cwt	Single carburettor .. .. .	SC
Independent front suspension .. .. .	i.f.s.	Specific gravity .. .. .	sp.gr.
Internal diameter .. .. .	i.da.	Square centimetres .. .. .	cm <sup>2</sup>
Inches of mercury .. .. .	in.Hg	Square inches .. .. .	in <sup>2</sup>
Inches .. .. .	in	Standard .. .. .	std.
Kilogramme (force) .. .. .	kgf	Standard wire gauge .. .. .	s.w.g.
Kilogramme (mass) .. .. .	kg	Synchroniser/synchromesh .. .. .	synchro.
Kilogramme centimetre (torque) .. .. .	kgf.cm	Third .. .. .	3rd
Kilogramme per square centimetre .. .. .	kg/cm <sup>2</sup>	Top dead centre .. .. .	TDC
Kilogramme metres (torque) .. .. .	kgf.m	United Kingdom .. .. .	UK
Kilometres .. .. .	km	Volts .. .. .	V
Kilometres per hour .. .. .	km/h	Watts .. .. .	W
Kilovolts .. .. .	kV		
King pin inclination .. .. .	k.p.i.	<b>SCREW THREADS</b>	
Left-hand thread .. .. .	LHThd	American Standard Taper Pipe .. .. .	NPTF
Litres .. .. .	litre	British Association .. .. .	BA
Low compression .. .. .	l.c.	British Standard Fine .. .. .	BSF
Low tension .. .. .	l.t.	British Standard Pipe .. .. .	BSP
Maximum .. .. .	max.	British Standard Whitworth .. .. .	Whit.
Metre .. .. .	m	Unified Coarse .. .. .	UNC
Microfarad .. .. .	mfd	Unified Fine .. .. .	UNF
		Metric .. .. .	Met.



		Operation Number	
	Description	Remove/Refit	Check/Overhaul
A	Adjust brakes .. .. .		70.25.03
	Adjustments, carburettor .. .. .		17.20.00
	Adjustment, clutch .. .. .		33.30.02
	Adjustment steering box .. .. .		57.35.01
	Adjustment, tappets .. .. .		19.15.17
	Air cleaner .. .. .	19.10.04	19.10.16
	Air distribution flaps .. .. .	80.15.09	
	Air filter, charcoal container .. .. .	17.15.07	
	Air intake (fresh air) .. .. .	80.15.29	
	Alignment check, chassis frame .. .. .		76.10.02
	Alternator .. .. .	86.10.02	86.10.08
	Axle assembly, rear .. .. .	51.25.01	
	Axle case oil seal .. .. .	54.15.04	
	Axle, front .. .. .	54.15.01	
Axle shafts, rear .. .. .	51.10.01		
B	Ball-joints, drag link .. .. .	57.55.16	
	Ball-joints, longitudinal steering tube .. .. .	57.55.12	
	Ball-joints, steering .. .. .		57.55.24
	Ball-joints, track rod .. .. .	57.55.08	
	Battery .. .. .	86.15.01	
	Bearings, camshaft .. .. .	12.13.01	
	Bearings, connecting rods .. .. .	12.17.01	12.17.10
	Bearings, crankshaft .. .. .	12.21.33	12.21.46
	Bearing, crankshaft spigot .. .. .	12.53.20	
	Bearing end-float, front hub .. .. .		60.25.13
	Bearing end-float, rear hub .. .. .		64.15.13
	Bearing, top, steering column .. .. .	57.40.19	
	Bell housing .. .. .	37.12.07	37.12.08
	Big-end bearings .. .. .	12.17.01	12.17.10
	Brakes bleed .. .. .		70.25.02
	Blackout lamps, front .. .. .	A86.40.43	
	Blackout lamps, rear .. .. .	A86.40.44	
	Bleeding, clutch system .. .. .		33.15.01
	Body, rear .. .. .	76.10.11	
	Body repairs, general information .. .. .		76.00.00
	Bonnet .. .. .	76.16.01	
	Box, heater .. .. .	80.20.01	
	Brakes, adjust .. .. .		70.25.03
	Bleed brakes .. .. .		70.25.02
	Brake drums, front .. .. .	70.10.02	
	Brake drums, rear .. .. .	70.10.03	
	Brake hoses .. .. .	70.15.02/04	
	Brake linings .. .. .	70.40.10	
	Brake master cylinder .. .. .	70.30.01	70.30.02
	Brake pedal .. .. .	70.35.01	
	Brake pipes .. .. .	70.20.01/28	
	Brake servo .. .. .	70.50.01	70.50.06



ALPHABETICAL INDEX

	Description	Remove/Refit	Check/Overhaul
<b>B</b>	Brake shoes, front .. .. .	70.40.02	
	Brake shoes, rear .. .. .	70.40.03	
	Brake shoes, transmission .. .. .	70.45.18	
	Brake, transmission .. .. .	70.45.16	70.45.09
	Bush, primary pinion .. .. .	12.53.20	
<b>C</b>	Cable, cold start control .. .. .	19.20.26	
	Cable, heater/ventilator flap .. .. .	80.10.06	
	Cable, heater water valve .. .. .	80.10.07	
	Cable, inner, speedometer .. .. .	88.30.07	
	Cable, speedometer .. .. .	88.30.06	
	Camshaft .. .. .	12.13.01	
	Camshaft bearings .. .. .	12.13.01	
	Carburettor.. .. .	19.15.09	19.15.17
	Carburettor, float chamber needle valve .. .. .	19.15.24	
	Carburettor, float chamber level .. .. .		19.15.32
	Carburettor, diaphragm .. .. .	19.15.35	
	Casing, main, gearbox .. .. .	37.12.40	37.12.43
	Contents gauge, fuel .. .. .	88.25.26	
	Coolant .. .. .		26.10.01
	Coolant expansion tank.. .. .	26.15.01	
	Coolant temperature gauge .. .. .	88.25.14	
	Coolant temperature transmitter .. .. .	88.25.20	
	Cold start control cable .. .. .	19.20.26	
	Convoy, lights .. .. .	A86.40.44	
	Chaincase, power take-off .. .. .	A37.33.01	
	Charcoal container .. .. .	17.15.13	
	Charcoal container air filter .. .. .	17.15.07	
	Chassis frame, alignment check .. .. .	76.10.02	
	Choke warning light switch .. .. .	86.65.53	
	Clutch adjustment .. .. .	33.30.02	
	Clutch assembly .. .. .	33.10.01	33.10.08
	Clutch hydraulic system, bleed .. .. .	33.15.01	
	Clutch master cylinder .. .. .	33.20.01	33.20.07
	Clutch pedal .. .. .	33.30.02	
	Clutch release assembly .. .. .	33.25.12	
	Clutch slave cylinder .. .. .	33.35.01	33.35.07
	Coil, ignition .. .. .	86.35.32	
	Compression pressures .. .. .		12.25.01
	Connecting rods and pistons .. .. .	12.17.01	12.17.10
	Connector, four way .. .. .	70.15.35	
	Container, charcoal .. .. .	17.15.13	
	Controls, heater .. .. .	80.10.02	
	Cover cylinder side .. .. .	12.29.36	
	Cover, timing gear .. .. .	12.65.01	
	Crankshaft .. .. .	12.21.33	12.21.46
Crankshaft front oil seal .. .. .	12.65.05		
Crankshaft rear oil seal .. .. .	12.21.20		





		Operation Number	
	Description	Remove/Refit	Check/Overhaul
C	Cylinder head .. .. .	12.29.10	12.29.21
	Cylinder pressures .. .. .		12.25.01
	Cylinder side cover .. .. .	12.29.36	
	Cylinders, wheel, front .. .. .	70.60.03	70.60.11
	Cylinders, wheel, rear .. .. .	70.60.18	70.60.26
D	Dash panel .. .. .	76.10.36	
	De-mister hose .. .. .	80.15.01	
	De-mister nozzle .. .. .	80.15.03	
	Differential assembly, front .. .. .	54.10.01	54.10.07
	Differential assembly, rear .. .. .	51.15.01	51.15.07
	Direction indicator switch .. .. .	86.65.55	
	Distribution flaps, air .. .. .	80.15.09	
	Distributor .. .. .	86.35.20	86.35.26
	Distributor and oil pump drive shaft .. .. .	12.10.22	
	Distributor drive shaft .. .. .	12.10.22	
	Door glass, side .. .. .	76.31.01	
	Door locks .. .. .	76.37.12	
	Doors .. .. .	76.28.01	
	Drag link .. .. .	57.55.17	
	Drag link ball-joints .. .. .	57.55.16	
	Drive shaft, power take-off to winch .. .. .	A47.15.18	
	Drums, brake, front .. .. .	70.10.02	
Drums, brake, rear .. .. .	70.10.03		
E	End float, front hub bearing .. .. .		60.25.13
	End float, rear hub bearing .. .. .		64.15.13
	Engine assembly .. .. .	12.41.01	
	Exhaust manifold .. .. .	30.15.10	
	Exhaust system .. .. .	30.10.09/19	
	Exhaust valve .. .. .		12.29.21
	Expansion tank, coolant .. .. .	26.15.01	
External oil filter assembly .. .. .	12.60.01		
F	Facia, lower .. .. .	76.46.05	
	Facia support panel .. .. .	76.46.06	
	Facia top rail .. .. .	76.46.04	
	Fan blades and pulley .. .. .	26.25.01	
	Fan motor, heater/blower .. .. .	80.20.15	
	Fan switch, heater .. .. .	80.10.22	
	Filter, air, charcoal container .. .. .	17.15.07	
	Filter, engine oil .. .. .	12.60.01	
	Filter, engine sump .. .. .	12.60.20	
Filter, fuel pump .. .. .	19.45.16		



	Description	Operation Number	
		Remove/Refit	Check/Overhaul
<b>F</b>	Flap cable, heater/ventilator .. .. .	80.10.06	
	Flaps, air distribution .. .. .	80.15.09	
	Flasher lamp, front .. .. .	86.40.42	
	Flasher lamp, rear .. .. .	86.40.45	
	Flasher switch .. .. .	86.65.55	
	Flasher unit .. .. .	86.55.11	
	Floor, front .. .. .	76.10.12	
	Flywheel .. .. .	12.53.07	12.53.10
	Flywheel ring gear .. .. .	12.53.19	
	Four way connector .. .. .	70.15.35	
	Frame and windscreen .. .. .	76.81.02	
	Fresh air intake .. .. .	80.15.29	
	Front axle .. .. .	54.15.01	
	Front brake drums .. .. .	70.10.02	
	Front differential assembly .. .. .	54.10.01	54.10.07
	Front flasher lamp .. .. .	86.40.42	
	Front floor .. .. .	76.10.12	
	Front half-shaft assembly .. .. .	54.20.07	54.20.09
	Front hub .. .. .	60.25.01	60.25.07
	Front hub bearing end-float .. .. .		60.25.13
	Front hub stub axle .. .. .	60.25.22	60.25.24
	Front output shaft housing .. .. .	37.10.05	37.10.06
	Front pinion oil seal .. .. .	54.10.20	
	Front propeller shaft .. .. .	47.15.02	47.15.11
	Front road spring .. .. .	60.20.01	60.20.07
	Front seat base .. .. .	76.70.06	
	Front seat belt .. .. .	76.73.02	
	Front shock absorber .. .. .	60.30.02	
	Front side lamp .. .. .	86.40.34	
	Front wheel alignment .. .. .		57.65.01
	Front wing .. .. .	76.10.26	
	Fuel contents gauge .. .. .	88.25.26	
	Fuel lift pump .. .. .	19.45.09	19.45.16
	Fuel tank .. .. .	19.55.01	
	Fuel tank, expansion .. .. .	A19.55.11	19.60.02/08
	Fuel tank gauge unit .. .. .	88.25.32	
	Fuse box .. .. .	86.70.01	
<b>G</b>	Gauge, coolant temperature .. .. .	88.25.14	
	Gauge, fuel contents .. .. .	88.25.26	
	Gauge unit, fuel tank .. .. .	88.25.32	
	Gearbox .. .. .	37.20.01	
	Gearbox main casing .. .. .	37.12.40	37.12.43
	Gearbox, transfer .. .. .	37.29.25	37.29.28
	Gearchange lever, main .. .. .	37.16.04	37.16.10
	Gearchange selectors, main .. .. .	37.16.31	37.16.34
	Gears, intermediate .. .. .	37.29.28	
	Geometry, steering .. .. .		57.65.02
	Glass, door, side .. .. .	76.31.01/02	
	Glass, windscreen .. .. .	76.81.03	



Operation Number

	Description	Remove/Refit	Check/Overhaul
G	Grille panel, radiator ... ..	76.55.06	
	Grille panel, ventilator .. ..	80.15.16	
	Guides, valve .. ..		12.29.21
H	Half shaft assembly, front .. ..	54.20.07	54.20.09
	Head, cylinder .. ..	12.29.10	12.29.21
	Headlamp assembly .. ..	86.40.02	
	Headlamp flasher switch .. ..	86.65.55	
	Headlamp switch .. ..	86.65.10	
	Heater/blower fan motor .. ..	80.20.15	
	Heater box .. ..	80.20.01	
	Heater controls .. ..	80.10.02	
	Heater fan switch .. ..	80.10.22	
	Heater pipe, feed to heater .. ..	80.25.15	
	Heater pipe, return from heater .. ..	80.25.16	
	Heater/ventilator flap cable .. ..	80.10.06	
	Heater water valve .. ..	80.10.16	
	Heater water valve cable .. ..	80.10.07	
	Height, trim .. ..	60.45.01	
	Horn .. ..	86.30.09	
	Horn switch .. ..	86.65.55	
	Hoses, brake .. ..	70.15.02/04	
	Hose, demister .. ..	80.15.01	
	Housing, bell .. ..	37.12.07	37.12.08
	Housing, front output shaft .. ..	37.10.05	37.10.06
	Housing, speedometer drive .. ..	37.25.09	37.25.13
	Housing, swivel pin .. ..	60.15.20	60.15.23
	Hub bearing end-float, front .. ..		60.25.13
	Hub bearing end-float, rear .. ..		64.15.13
	Hub, front .. ..	60.25.01	60.25.07
	Hub, rear .. ..	64.15.01	64.15.07
Hub stub axle, front .. ..	60.25.22	60.25.24	
Hub stub axle, rear .. ..	64.15.20	64.15.21	
I	Idler gear, reverse .. ..	37.20.13	37.20.14
	Ignition coil .. ..	86.35.32	
	Ignition/starter switch .. ..	86.65.02	
	Ignition timing .. ..		86.35.20
	Inlet valve .. ..		12.29.21
	Inspection sockets .. ..	86.45.33	
	Instrument panel .. ..	88.20.01	
	Instrument panel light bulb .. ..	86.45.31	



ALPHABETICAL INDEX

		Operation Number	
	Description	Remove/Refit	Check/Overhaul
I	Instrument panel light switch .. .. .	86.65.12	
	Intake, fresh air .. .. .	80.15.29	
	Intermediate gears .. .. .	37.29.28	
J	Jets, windscreen washer .. .. .	84.10.09	
L	Layshaft .. .. .	37.20.19	
	Lever and linkage, transmission brake .. .. .	70.45.01	
	Lighting switch .. .. .	86.65.10	
	Linings, brake ... .. .	70.40.10	
	Linkage, throttle .. .. .	19.20.07	
	Lock stops, steering .. .. .		57.65.03
	Locks, door .. .. .	76.37.12	
	Longitudinal steering tube .. .. .	57.55.13	
	Longitudinal steering tube ball joints .. .. .	57.55.12	
	Lower panel, facia .. .. .	76.46.05	
	Lower tailgate .. .. .	76.28.30	
	M	Main bearings .. .. .	12.21.33
Main gearchange lever .. .. .		37.16.04	37.16.10
Main gearchange selectors .. .. .		37.16.31	37.16.34
Mainshaft .. .. .		37.20.25	37.20.31
Maintenance .. .. .			10.10.03/24
Manifold, exhaust .. .. .		30.15.10	
Map light .. .. .		A86.45.34	
Master cylinder, brake-single .. .. .		70.30.01	70.30.02
Master cylinder, clutch .. .. .		33.20.01	
Motor, heater/blower fan .. .. .		80.20.15	
N	Nato trailer socket .. .. .	A86.67.01	
	Nozzle, de-mister .. .. .	80.15.03	
	Number plate light .. .. .	A86.40.81	
O	Oil cooler assembly .. .. .	A12.60.11	
	Oil filter assembly, external .. .. .	12.60.01	
	Oil pressure warning switch .. .. .	88.25.08	
	Oil pump .. .. .	12.60.26	12.60.32
	Oil pump drive shaft (2.6) .. .. .	12.10.22	
	Oil seal, axle case .. .. .	54.15.04	
	Oil seal, crankshaft, front .. .. .	12.65.05	
	Oil seal, crankshaft, rear .. .. .	12.21.20	
	Oil seal, front pinion .. .. .	54.10.20	
	Oil seal, rear pinion .. .. .	51.20.01	
	Oil seal, timing gear cover .. .. .	12.65.05	
	Oil strainer, sump .. .. .	12.60.20	
	Oil sump .. .. .	12.60.44	
P	Paintwork, general information .. .. .		78.00.00
	Panel, dash .. .. .	76.10.36	
	Panel illumination lamp bulb .. .. .	86.45.31	
	Panel, instrument .. .. .	88.20.01	
	Panel light switch .. .. .	86.65.12	



								Operation Number	
	Description						Remove/Refit	Check/Overhaul	
P	Panel, ventilator grille .. .. .						80.15.16		
	Parcel tray .. .. .						76.46.05		
	Parking lamp, front .. .. .						86.40.34		
	Pedal, brake .. .. .						70.35.01		
	Pedal, clutch .. .. .						33.30.02		
	Pinion oil seal, front .. .. .						54.10.20		
	Pinion, primary .. .. .						37.12.08		
	Pipes, brake .. .. .						70.20.01/28		
	Pipe, feed to heater .. .. .						80.25.15		
	Pipe, return from heater .. .. .						80.25.16		
	Pistons .. .. .						12.17.01	12.17.10	
	Power take-off .. .. .						A37.33.01	A37.33.11	
	Pressure check, cylinder .. .. .							12.25.01	
	Primary pinion .. .. .						37.12.08		
	Primary pinion bush .. .. .						12.53.20		
	Propeller shaft, front .. .. .						47.15.02	47.15.11	
	Propeller shaft, rear .. .. .						47.15.03	47.15.12	
	Pump, fuel lift .. .. .						19.45.09	19.45.16	
	Pump oil .. .. .						12.60.26	12.60.32	
	Pump, water .. .. .						26.50.01	26.50.06	
	Pump, windscreen washer .. .. .						84.10.21		
Push rods .. .. .						12.29.10			
Propeller shaft, power take-off to winch .. .. .						A47.15.18	A47.15.19		
Q	Quarter light .. .. .						76.81.20		
R	Radiator block .. .. .						26.40.04		
	Radiator grille panel .. .. .						76.55.06		
	Rear axle assembly .. .. .						51.25.01		
	Rear axle shafts .. .. .						51.10.01		
	Rear body .. .. .						76.10.11		
	Rear differential assembly .. .. .						51.15.01	51.15.07	
	Rear flasher lamp .. .. .						86.40.45		
	Rear hub .. .. .						64.15.01	64.15.07	
	Rear hub bearing end-float .. .. .						64.15.13		
	Rear hub stub axle .. .. .						64.15.20	64.15.21	
	Rear lamp .. .. .						86.40.79		
	Rear oil seal, crankshaft .. .. .						12.21.20		
	Rear pinion oil seal .. .. .						51.20.01		
	Rear propeller shaft .. .. .						47.15.03	47.15.12	
	Rear road spring .. .. .						64.20.01	64.20.04	
	Rear shock absorber .. .. .						64.30.01		
	Relay, steering .. .. .						57.50.02	57.50.08	
	Repairs, body, general information .. .. .							76.00.00	
	Reservoir, windscreen washer .. .. .						84.10.01		
	Reverse idler gear .. .. .						37.20.13	37.20.14	
	Reversing lamps .. .. .						A86.40.80		
	Reverse selector stop .. .. .						37.16.28		
	Ring gear, flywheel .. .. .						12.53.19		
	Road spring, front .. .. .						60.20.01	60.20.07	
Road spring, rear .. .. .						64.20.01	64.20.04		
Rocker shafts .. .. .						12.29.35/36			



ALPHABETICAL INDEX

	Description	Remove/Refit	Check/Overhaul
<b>R</b>	Rockers, valve gear .. .. .	12.29.35/36	12.29.55
	Roof panel .. .. .	76.10.13	
<b>S</b>	Seat base, front .. .. .	76.70.06	
	Seat belt, front .. .. .	76.73.02	
	Seats, valves .. .. .		12.29.21
	Selectors, main gearchange .. .. .	37.16.31	37.16.34
	Service tools .. .. .		99.00.00
	Servo, brake .. .. .	70.50.01	70.50.06
	Setting, linkage, accelerator pump .. .. .		17.20.00
	Shaft, power take-off to winch .. .. .	A47.15.18	A47.15.19
	Shock absorber, front .. .. .	60.30.02	
	Shock absorber, rear .. .. .	64.30.01	
	Shoes, brake, front .. .. .	70.40.02	
	Shoes, brake, rear .. .. .	70.40.03	
	Shoes, transmission brake .. .. .	70.45.18	
	Side cover, cylinder .. .. .	12.29.36	
	Side door glass .. .. .	76.31.01	
	Side lamp, front .. .. .	86.40.34	
	Slave cylinder, clutch .. .. .	33.35.01	33.35.07
	Sockets, inspection .. .. .	86.45.33	
	Socket, trailer .. .. .	A86.67.01	
	Speedometer .. .. .	88.30.01	
	Speedometer cable, complete .. .. .	88.30.06	
	Speedometer cable, inner .. .. .	88.30.07	
	Speedometer drive housing .. .. .	37.25.09	37.25.13
	Spigot bearing, crankshaft .. .. .	12.53.20	
	Spring, front, road .. .. .	60.20.01	60.20.07
	Spring, rear, road .. .. .	64.20.01	64.20.04
	Springs, valve .. .. .		12.29.21
	Stabilizer, voltage .. .. .	88.20.26	
	Starter motor .. .. .	86.60.01	86.60.13
	Starter ring gear .. .. .	12.53.19	
	Starter solenoid .. .. .	86.60.08	
	Starter switch .. .. .	86.65.02	
Steering ball joints .. .. .		57.55.24	
Steering box, adjust .. .. .		57.35.01	
Steering box and column .. .. .	57.45.01	57.45.07	
Steering column and box .. .. .	57.45.01	57.45.07	
Steering column top bearing .. .. .	57.40.19		
Steering geometry .. .. .		57.65.02	
Steering levers .. .. .	60.15.20		
Steering lock stops .. .. .		57.65.03	
Steering relay .. .. .	57.50.02	57.50.08	
Steering tube, longitudinal .. .. .	57.55.13		
Steering wheel .. .. .	57.60.01		



	Description	Remove/Refit	Operation Number	
			Check/Overhaul	
S	Stop light switch .. .. .	86.65.51		
	Stop, reverse selector .. .. .	37.16.28		
	Stub axle, front hub .. .. .	60.25.22	60.25.24	
	Stub axle, rear hub .. .. .	64.15.20	64.15.21	
	Sump, engine oil .. .. .	12.60.44		
	Sump oil strainer .. .. .	12.60.20		
	Switch, choke warning light .. .. .	86.65.53		
	Switch, direction indicator .. .. .	86.65.55		
	Switch, headlamp, flasher .. .. .	86.65.55		
	Switch, heater fan .. .. .	80.10.22		
	Switch, horn .. .. .	86.65.55		
	Switch, ignition/starter .. .. .	86.65.02		
	Switch, lighting .. .. .	86.65.10		
	Switch, oil pressure warning .. .. .	88.25.08		
	Switch, panel light .. .. .	86.65.12		
	Switch, steering column lock ignition/starter .. .. .	57.40.31		
	Switch, vacuum, throttle controlled .. .. .	17.20.25	17.20.24	
	Switch, windscreen wiper .. .. .	86.65.38		
	Switch, windscreen washer .. .. .	84.10.25		
	Swivel pin housing .. .. .	60.15.20	60.15.23	
Support panel, fascia .. .. .	76.46.06			
T	Tailgate, lower .. .. .	76.28.30		
	Tail lamp .. .. .	86.40.79		
	Tank, fuel .. .. .	19.55.01		
	Tappets .. .. .	12.29.36		
	Tappet adjustment .. .. .		12.29.10/36	
	Temperature gauge, coolant .. .. .	88.25.14		
	Temperature transmitter, coolant .. .. .	88.25.20		
	Tensioner, timing chain .. .. .	12.65.28		
	Thermostat .. .. .	26.45.01	26.45.09	
	Throttle/accelerator controls .. .. .		19.00.00	
	Throttle controlled vacuum switch .. .. .	17.20.25	17.20.24	
	Throttle linkage .. .. .	19.20.07		
	Throttle prop, carburettor .. .. .	17.20.35		
	Timing chain .. .. .	12.65.12		
	Timing chain tensioner .. .. .	12.65.28		
	Timing gears .. .. .	12.65.12		
	Timing gear cover .. .. .	12.65.01		
	Timing gear cover oil seal .. .. .	12.65.05		



	Description	Remove/Refit	Operation Number	
			Check/Overhaul	
T	Timing, ignition .. .. .		17.20.00	
	Tools, service .. .. .		99.00.00	
	Top bearing, steering column .. .. .	57.40.19		
	Top rail, fascia .. .. .	76.46.04		
	Track rod .. .. .	57.55.09		
	Track rod ball-joints .. .. .	57.55.08		
	Transfer gearbox .. .. .	37.29.25	37.29.28	
	Transmission brake .. .. .	70.45.16	70.45.09	
	Transmission brake lever and linkage .. .. .	70.45.01		
	Transmission brake shoes .. .. .	70.45.18		
	Transmitter, coolant temperature .. .. .	88.25.20		
	Trim height .. .. .		60.45.01	
	Tubes, windscreen washer .. .. .	84.10.15		
Tyres and wheels, general information .. .. .	74.10.00			
V	Valve, exhaust .. .. .		12.29.21	
	Valve gear .. .. .	12.29.35/36		
	Valve guides .. .. .		12.29.21	
	Valve, heater water .. .. .	80.10.16		
	Valve, inlet .. .. .		12.29.21	
	Valve rockers .. .. .	12.29.35/36	12.29.55	
	Valve seats .. .. .		12.29.21	
	Valve springs .. .. .		12.29.21	
	Valve timing .. .. .		12.65.12	
	Ventilator grille panel .. .. .	80.15.16		
Voltage stabilizer .. .. .	88.20.26			
W	Warning lamp bulbs .. .. .	86.45.31		
	Water pump .. .. .	26.50.01	26.50.06	
	Water valve cable, heater .. .. .	80.10.07		
	Water valve, heater .. .. .	80.10.16		
	Wheel alignment, front .. .. .		57.65.01	
	Wheel cylinders, front .. .. .	70.60.03	70.60.11	
	Wheel cylinders, rear .. .. .	70.60.18	70.60.26	
	Wheel, steering .. .. .	57.60.01		
	Wheels and tyres, general information .. .. .	74.10.00		
	Winch, operation .. .. .	A37.34.10		
	Winch, remove and refit .. .. .	A37.34.11		
Windscreen and frame .. .. .	76.81.02			





	Description	Operation Number	
		Remove/Refit	Check/Overhaul
W	Windscreen glass .. .. .	76.81.03	
	Windscreen washer jets .. .. .	84.10.09	
	Windscreen washer pump .. .. .	84.10.21	
	Windscreen washer reservoir .. .. .	84.10.01	
	Windscreen washer tube .. .. .	84.10.15	
	Windscreen wiper arms .. .. .	84.15.01	
	Windscreen wiper wheel boxes .. .. .	84.15.10	
	Windscreen wiper motor and drive .. .. .	84.15.09	84.15.18
	Windscreen wiper switch .. .. .	86.65.38	
	Windscreen washer switch .. .. .	84.10.25	
	Wing, front .. .. .	76.10.26	



Main body of faint, illegible text, likely a list or report. The text is too light to transcribe accurately.

Second section of faint, illegible text, continuing the list or report.

Third section of faint, illegible text, continuing the list or report.